



HELLA
MINING FASTMOVER
CATALOGUE

SUPERIOR PERFORMANCE

Maximize Visibility • Reduce Down-Time
• Improve Mine Safety & Productivity



Introducing ZEROGLARE

HELLA Mining proudly introduces the innovative ZEROGLARE optical system. ZEROGLARE prevents blinding light glare for improved vision and safety.



RokLUME 380 N



RokLUME 280 N



HELLA Mining is proud to introduce the RokLUME 380 and RokLUME 280 LED worklights – incorporating over 100 years of automotive optical design into the worlds most advanced heavy-duty worklights for the Mining industry. By combining the strength and durability of the AS 5000LED with the same optical technology developed for luxury cars, HELLA have created ZEROGLARE, a new benchmark in Mining equipment lighting.

ZEROGLARE TECHNOLOGY

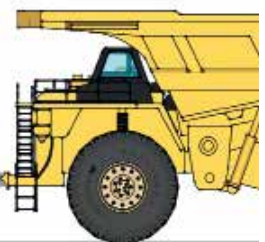
HELLA Mining has developed the ZEROGLARE optical system to bring the safety and comfort of highway driving to Mining operations! The ZEROGLARE optical system ensures no light from oncoming traffic will be directed into the eyes of oncoming drivers eliminating the occurrence of discomfort or disability glare. The innovative optical system has a sharp horizontal cut off to control the light onto the ground in front of the vehicle and not into oncoming operators field of vision.

HELLA Mining utilised the HELLA Automotive LED optical developments for high end LED headlights for luxury cars and developed an extremely robust worklight which offers all the benefits of highway driving.

Most work light manufacturers active in the Mining Industry do not have the capability to design and develop in house optics, optical systems typically used are “off the shelf” components from household down lights or outdoor flood lights. This means as light outputs increase, so does the issue of glare where lots of the light going into the oncoming operators eyes. This was such an issue that a lot of mine sites that had tested LED worklights reverted back to the original lighting systems, despite the many benefits of LED technology.

At HELLA Mining we consulted with the Mining industry and invested into the research and development of an optical system that would put the light only where it was needed. The end result is ZEROGLARE where operators get increased visibility and increased safety without blinding oncoming operators on-site for both surface and underground operations.

Find more information at www.hellazeroglare.com



The ZEROGLARE optics ensure light vehicle operators are not blinded by oncoming Haul Trucks lighting systems



RokLUME 380



RokLUME 280

The RokLUME 380 and RokLUME 280 feature a powerful light engine of up to 7,800 and up to 4,400 measured lumens respectively, with the ability to choose from 5 different light distributions including our industry first ZEROGLARE optic. To meet the demands of different weather conditions, the RokLUME worklights are available in 2 colour temperatures, including 5,000° Kelvin colour temperature for enhanced colour rendering in normal conditions and 1,800° Kelvin colour temperature for minimal back scatter in fog or snow use.

Advanced design techniques and assembly robotics ensure that the RokLUME worklights are manufactured to be fully sealed and submersible to meet the stringent requirements of IP 6K9K and IP 6K8, ensuring no dust or water ingress can occur.

The RokLUME worklights feature an advanced NanoSafe non-stick and easy to clean surface coating, and are fast to install thanks to the Nord-Lock washers and the aiming angles laser engraved onto the bracket.

Connecting the RokLUME 380 to the machine is safe thanks to the double insulated silicone supply cable and heavy duty cable gland. We also supply a DT connector with both ends of the plug, so retrofitting as well as new installations are a breeze.

Only the best manufacturing materials were considered during the development stage of the RokLUME worklights, including a high impact resistant hardened polycarbonate compound lens, stainless steel bracket and premium grade anti-corrosion aluminium housing. A proven rubber dampening system keeps everything in check from vibration and statutory approvals include ECE-R10 and RCM compliance.



ZEROGLARE Version



Pencil Beam Version

RokLUME 380 N

| | |
|--------------------|-----------------|
| RokLUME 380 N ZG | 1GA 996 197-001 |
| RokLUME 380 N CR | 1GA 996 197-011 |
| RokLUME 380 N LR | 1GA 996 197-021 |
| RokLUME 380 N PB | 1GA 996 197-041 |
| RokLUME 380 N F | 1GA 996 197-031 |
| RokLUME 380 A N ZG | 1GA 996 197-051 |
| RokLUME 380 A N CR | 1GA 996 197-061 |
| RokLUME 380 A N LR | 1GA 996 197-071 |
| RokLUME 380 A N PB | 1GA 996 197-091 |
| RokLUME 380 A N F | 1GA 996 197-081 |

RokLUME 380 N Auxiliary Light

| | |
|-------------------------------------|-----------------|
| RokLUME 380 N Auxiliary Light, 12 V | 1FA 996 197-151 |
| RokLUME 380 N Auxiliary Light, 24V | on request |

| | |
|----|-------------|
| ZG | ZEROGLARE |
| CR | Close range |
| LR | Long range |
| PB | Pencil Beam |
| F | Flood |
| N | NanoSafe |
| A | Amber |



ZEROGLARE Version



Long range Version



RokLUME 280 N

| | |
|--------------------|-----------------|
| RokLUME 280 N ZG | 1GA 995 606-541 |
| RokLUME 280 N CR | 1GA 995 606-501 |
| RokLUME 280 N LR | 1GA 995 606-511 |
| RokLUME 280 N PB | 1GA 995 606-521 |
| RokLUME 280 A N ZG | 1GA 995 606-641 |
| RokLUME 280 A N CR | 1GA 995 606-601 |
| RokLUME 280 A N LR | 1GA 995 606-611 |
| RokLUME 280 A N PB | 1GA 995 606-621 |
| RokLUME 280 G N ZG | 1GA 995 606-741 |
| RokLUME 280 G N PB | 1GA 995 606-721 |

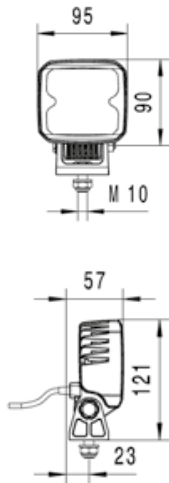
| | |
|----|-------------|
| ZG | ZEROGLARE |
| CR | Close range |
| LR | Long range |
| PB | Pencil Beam |
| N | NanoSafe |
| A | Amber |
| G | Green |



RokLUME 150

| | |
|---------------------------------------|-----------------|
| RokLUME 150 CR | 1GA 996 288-081 |
| RokLUME 150 LR | 1GA 996 288-121 |
| RokLUME 150 A CR, sea turtle friendly | 1GA 996 288-101 |

| | |
|----|--------------------------|
| CR | Close range illumination |
| LR | Long range illumination |
| A | Amber |



RokLUME 155 TP

Developed specifically for Mining applications
Thermo plastic housing
Compact size

Light output (measured): 1,000 lumen, power requirement: 15 Watt, colour temperature: 5,000° Kelvin, Multivolt, reverse polarity protection, transient spike circuit protection, over-voltage protection, thermal management, IP 6K9K / IP 6K8, ECE-R10 approved, RCM compliance, high quality thermo plastic housing for Heavy Duty use, mounting standing / hanging, harness with DT connector, Heavy Duty bracket.

| | |
|---------------------|-----------------|
| RokLUME 155 TP CR | 1GA 996 284-051 |
| RokLUME 155 TP LR | 1GA 996 284-061 |
| RokLUME 155 TP A CR | 1GA 996 284-071 |

CR Close range
LR Long range
A Amber



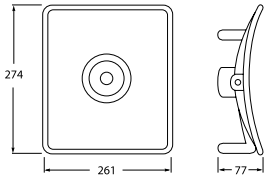
illuminated

RokLUME 140

| | |
|------------------------------------|-----------------|
| RokLUME 140 G | 1G0 995 050-091 |
| RokLUME 140 R | 1G0 995 050-101 |
| RokLUME 140 CR, standing | 1G0 995 050-001 |
| RokLUME 140 CR, hanging | 1G0 995 050-011 |
| RokLUME 140 LR, standing / hanging | 1G0 995 050-021 |

CR Close range
LR Long range

G Green
R Red



Side view



LED Work Lamp - Nova 30

| | |
|-------------------|---|
| Light Output | 3300 lumen. |
| Power Consumption | 32W |
| Temperature Range | -10° to +40°C |
| Voltage | 240V AC/50Hz |
| Cable Length | Pre-wired with 5m of cable. |
| Protection | IP 67 (Protection against dust and water) |
| Compliance | N19090 |

2XM 910 426-001



HypaLUME 48V RFCommSafe

| | |
|----------------------------|-----------------|
| HypaLUME 48V RFCommSafe CR | 1GJ 011 872-221 |
| HypaLUME 48V RFCommSafe LR | 1GJ 011 872-231 |
| HypaLUME 48V RFCommSafe XW | 1GJ 011 872-241 |

Adapter Harness for AC applications
HypaLUME 48V RFCommSafe Accessory Cable, 1.13 mm² 2-core PVC sheathed automotive cable, 1 m length with 4-pole DT connector.

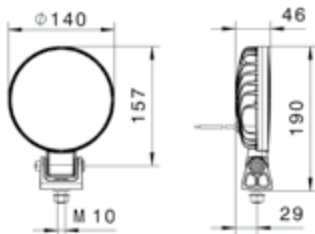
8KB 958 304-001

AC / DC converter
90 – 305 V AC, 48 V, Rated Current 6.7 A, 320 Watt, 47~63 Hz, -40~+70°C, IP 67.

8EN 332 584-031

CR Close range
LR Long range
XW Extra wide

This LED product has the following features

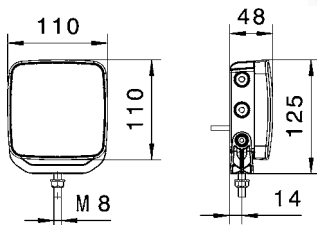


LED Offroad Signal Light, power requirement: 22 Watt, Multivolt, reverse polarity protection, over-voltage protection, thermal management, IP 6K9K / IP 6K7, ECE-R10 approved, RCM compliance, 2-pole DT connector, 300 mm cabling length, mounting standing / hanging

AP 1200 LED Offroad Signal Light

| | |
|-------|-----------------|
| amber | 1G4 011 722-501 |
| green | 1G4 011 722-511 |
| red | 1G4 011 722-521 |
| blue | 1G4 011 722-531 |

This LED product has the following features



LED Offroad Signal Light, power requirement: 11 Watt, Multivolt, reverse polarity protection, overvoltage protection, thermal management, IP 6K9K / IP 6K7, ECE-R10 approved, ADR approved, 2-pole DT connector and 150 mm cabling length, mounting standing / hanging bracket width 109 mm.

Repulse LED Offroad Signal Light

| | |
|-------|-----------------|
| amber | 2ZR 012 456-411 |
| green | 2ZR 012 456-421 |
| red | 2ZR 012 456-431 |
| blue | 2ZR 012 456-441 |

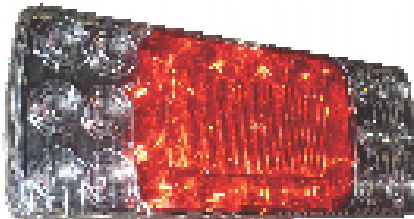


Highbay | IL Up

ELECTRONICS

| | |
|-----------------------------|---|
| Driver | Optionally as ON/OFF, 1-10 Volt dimming or DALI |
| Mains connection | 220 – 240 VDC, 120 – 277 VDC / 50 – 60 Hz |
| Protection class | Class I |
| Power factor | ≥ 0.95 c |
| Power requirement | 100 W/ 160 W/ 230 W |
| Surge voltage protection | > 4 kV |
| LIGHT TECHNOLOGY | |
| Light output | 14,000 lm / 20,000 lm / 30,000 lm |
| Color temperature | 4,000 K (840) / 5,000 K (850) / 6,500 k (865) |
| Color rendering index (CRI) | RA > 80 |
| Color consistency | < 3SDCM |

1GS 011 872-111



LED Tail Lamp

MULTI - FUNCTION LAMPS

LED instant light up provides extra braking distance

| LIGHT APERTURE | VOLTAGE | BULB |
|-----------------|-------------|-------------|
| 324.2 X 37.5 mm | 12V/24V | LED |
| Premium | 980.890-521 | 980.890-511 |



DuraRAY 4.0

| | |
|---------------------------|-----------------|
| DuraRAY 4.0 fix, amber | 2RL 012 985-001 |
| DuraRAY 4.0 fix, blue | 2RL 012 985-011 |
| DuraRAY 4.0 fix, red | 2RL 012 985-021 |
| DuraRAY 4.0 fix, green | 2RL 012 985-031 |
| DuraRAY 4.0 fix, white | 2RL 012 985-041 |
| DuraRAY 4.0 magnet, amber | 2RL 012 985-101 |
| DuraRAY 4.0 magnet, blue | 2RL 012 985-111 |
| DuraRAY 4.0 magnet, red | 2RL 012 985-121 |
| DuraRAY 4.0 magnet, green | 2RL 012 985-131 |
| DuraRAY 4.0 magnet, white | 2RL 012 985-141 |



K-LED Mining

| | |
|-----------------------|-----------------|
| amber, direct mount | 2XD 011 557-001 |
| amber, magnetic mount | 2XD 011 557-051 |
| amber, pole mount | 2XD 011 557-041 |
| red, direct mount | 2XD 011 557-021 |
| blue, direct mount | 2XD 011 557-011 |
| green, direct mount | 2XD 011 557-031 |



UltraRAY 2.0

| | |
|-------------------------|-----------------|
| UltraRAY 2.0 fix, amber | 2RL 012 983-001 |
| UltraRAY 2.0 fix, blue | 2RL 012 983-011 |
| UltraRAY 2.0 fix, red | 2RL 012 983-021 |
| UltraRAY 2.0 fix, green | 2RL 012 983-031 |
| UltraRAY 2.0 fix, white | 2RL 012 983-041 |

| | |
|----------------------------|-----------------|
| UltraRAY 2.0 magnet, amber | 2RL 012 983-101 |
| UltraRAY 2.0 magnet, blue | 2RL 012 983-111 |
| UltraRAY 2.0 magnet, red | 2RL 012 983-121 |
| UltraRAY 2.0 magnet, green | 2RL 012 983-131 |
| UltraRAY 2.0 magnet, white | 2RL 012 983-141 |

UltraRAY 2.1

| | |
|-------------------------|-----------------|
| UltraRAY 2.1 fix, amber | 2XD 012 984-001 |
| UltraRAY 2.1 fix, blue | 2XD 012 984-011 |
| UltraRAY 2.1 fix, red | 2XD 012 984-021 |
| UltraRAY 2.1 fix, green | 2XD 012 984-031 |
| UltraRAY 2.1 fix, white | 2XD 012 984-041 |

| | |
|----------------------------|-----------------|
| UltraRAY 2.1 magnet, amber | 2XD 012 984-101 |
| UltraRAY 2.1 magnet, blue | 2XD 012 984-111 |
| UltraRAY 2.1 magnet, red | 2XD 012 984-121 |
| UltraRAY 2.1 magnet, green | 2XD 012 984-131 |
| UltraRAY 2.1 magnet, white | 2XD 012 984-141 |

2.0 Rotating
2.1 Flashing



OptiRAY 2.0

| | |
|-----------------------|-----------------|
| OptiRAY 2.0 fix amber | 2RL 010 979-201 |
| OptiRAY 2.0 fix blue | 2RL 010 979-301 |
| OptiRAY 2.0 fix red | 2RL 010 979-401 |
| OptiRAY 2.0 fix green | 2RL 010 979-601 |
| OptiRAY 2.0 fix white | 2RL 010 979-701 |

| | |
|--------------------------|-----------------|
| OptiRAY 2.0 magnet amber | 2RL 010 979-221 |
| OptiRAY 2.0 magnet blue | 2RL 010 979-321 |
| OptiRAY 2.0 magnet red | 2RL 010 979-421 |
| OptiRAY 2.0 magnet green | 2RL 010 979-621 |
| OptiRAY 2.0 magnet white | 2RL 010 979-721 |

OptiRAY 2.1

| | |
|-----------------------|-----------------|
| OptiRAY 2.1 fix amber | 2XD 012 878-301 |
| OptiRAY 2.1 fix blue | 2XD 012 878-401 |
| OptiRAY 2.1 fix red | 2XD 012 878-501 |
| OptiRAY 2.1 fix green | 2XD 012 878-601 |
| OptiRAY 2.1 fix white | 2XD 012 878-701 |

| | |
|--------------------------|-----------------|
| OptiRAY 2.1 magnet amber | 2XD 012 878-321 |
| OptiRAY 2.1 magnet blue | 2XD 012 878-421 |
| OptiRAY 2.1 magnet red | 2XD 012 878-521 |
| OptiRAY 2.1 magnet green | 2XD 012 878-621 |
| OptiRAY 2.1 magnet white | 2XD 012 878-721 |

2.0 Rotating
2.1 Flashing



MiniRAY 2.1 Fixed

| | |
|-----------------------|-----------------|
| MiniRAY 2.1 fix amber | 2XD 012 480-301 |
| MiniRAY 2.1 fix blue | 2XD 012 480-321 |
| MiniRAY 2.1 fix red | 2XD 012 480-311 |
| MiniRAY 2.1 fix green | 2XD 012 480-341 |
| MiniRAY 2.1 fix white | 2XD 012 480-331 |

MiniRAY 2.1 Amber

| | |
|--------------------------|-----------------|
| MiniRAY 2.1 magnet amber | 2XD 012 480-401 |
| MiniRAY 2.1 magnet blue | 2XD 012 480-411 |
| MiniRAY 2.1 magnet red | 2XD 012 480-421 |
| MiniRAY 2.1 magnet green | 2XD 012 480-441 |
| MiniRAY 2.1 magnet white | 2XD 012 480-431 |

2.1 Flashing



DuraLED M – High intensity



DuraLED M – Combination Signal Lamp

DuraLED M – High intensity

| | |
|-------------------------------|-----------------|
| with 2.5 cable, bare wire | |
| amber (SAE) | 2XD 959 037-101 |
| red (SAE) | 2XD 959 037-001 |
| blue | 2XD 959 037-601 |
| green | 2XD 959 037-801 |
| white | 2XD 959 037-901 |
| with 250 mm cable and DT plug | |
| amber (SAE) | 2XD 959 037-141 |
| red (SAE) | 2XD 959 037-021 |
| blue | 2XD 959 037-621 |
| green | 2XD 959 037-821 |
| white | 2XD 959 037-921 |

DuraLED M – Combination Signal Lamp

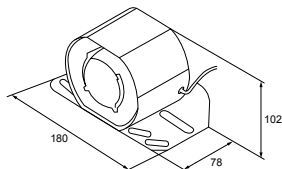
| | |
|-----------------------|-----------------|
| Signal Lamp Bare Wire | 2SD 959 050-061 |
| Signal Lamp DT | 2SD 959 050-071 |



DuraLED RCL Part No. 25K 980 615-021
(with integrated DT) shown

DuraLED Combi RCL

| | |
|---------------------------------|-----------------|
| 2.5 m bare wire | 2SK 980 603-511 |
| 0.25 m bare wire with 6-pole DT | 2SK 980 603-521 |
| Integrated 6-pole DT | 2SK 980 615-021 |

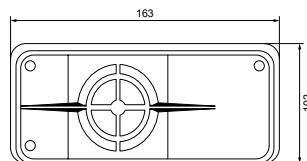


RetroVox Self Adjusting Reversing Alarm

Steel housing and construction for rugged applications. Integral bracket includes same mounting pattern with OEMs, self adjusting. Suitable for high pressure washing, epoxy encapsulated circuit board protects alarm against moisture and vibration damage.

87 – 112 db @ 1.2 m
SAE J994 Type D

| | |
|------------------------|-----------------|
| 12 – 24 VDC, bare wire | 3TA 910 174-031 |
|------------------------|-----------------|



RetroVox Ultra Heavy Duty Reversing Alarm

One of the most rugged adjustable, Heavy Duty alarms on the market. These alarms are designed to withstand the most punishing environments. They have 8 – 32 UNC terminal studs on the back of the unit. Used by major OEMs.

97, 107, 112 db @ 1.2 m
SAE J994 Types A, B and C

| | |
|------------------------|-----------------|
| 12 – 36 VDC, bare wire | 3TA 910 174-001 |
|------------------------|-----------------|



HELLA Mine E-Stop

Mine E-Stop

6HF 012 416-001

Jump Start Kit



Jump Start Plug

Jump Start Plug – high impact ABS plastic.
Copper (silver brass coated) terminals.

8JA 177 305-101

Suitable for 70 mm² cable. Connection via crimping and soldering process.

Jump Start Terminal

1) Jump start Terminal

Removes risk of terminal crossing, high impact ABS plastic, zinc coated terminals.

8JB 177 305-001

2) Terminal Kit

Kit of jump start terminal, bracket and cap.

8HG 177 305-031

3) Terminal Bracket

Bracket for mounting jump start terminal to vehicle body.

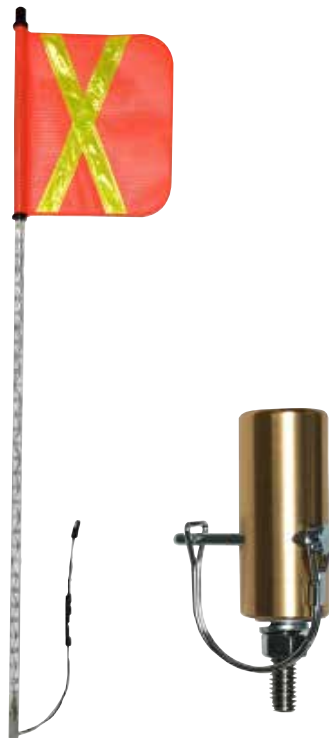
8HG 177 305-021

4) Terminal Cap

Cap to protect terminal from external environment when not in use.

9HD 177 305-011

LED Buggy Whip



Red flag – „X“ reflective tape, Whip colour Orange, 1.2 m long

2AA 910 084-211

Red flag – „X“ reflective tape, Whip colour Orange, 1.8 m long

2AA 910 084-221

Red flag – „X“ reflective tape, Whip colour Orange, 2.4 m long

2AA 910 084-231

Buggy Whip Mounting Kit

2AA 910 084-201



Battery Master Lockout Switches

The Battery Lockout Switch provides a reliable power disconnection and safety cut-off that protects the vehicle against tampering, theft and battery drain. It also protects service personnel from electrical hazards during service operations.

Composite-engineered polymer housing that will not corrode. 300 A continuous current rating at 12 V and 250 A at 24 V. Temperature operating range -40°C to + 85°C. Divider on base prevents accidental shorting of battery cables. Easy to read designations on bezel and 90° switch travel make it easy to identify switch position.

| | |
|-------------------------------|-----------------|
| Lockout Switch, Red Handle | 9MK 910 109-001 |
| Lockout Switch, Yellow Handle | 9MK 910 109-011 |



Battery Master Lockout Switches

Battery lockout switches provide a reliable power disconnection and safety cutoff that protects the vehicle against tampering, theft and battery drain. It also protects personnel from electrical hazards during service operations. The 4 Pole 9MK 910 109-201 allows isolation of both positive and negative sides from the battery, or isolation of 2 circuits with only one switch.

125 Amps at 6-36V DC Continuous (9MK 910 109-201), 300 Amps at 6 – 36 V DC Continuous (9MK 910 109-101 / -111), operating temperature -40°C to +29°C, silver environment contact surfaces, brass electrical contact surfaces, 45 degree switch travel, UL listed, suits panel thickness up to 6.5 mm.

| | |
|--|-----------------|
| 2 Pole and Field Terminals Switch, Red Handle | 9MK 910 109-101 |
| 2 Pole and Field Terminals Switch, Yellow Handle | 9MK 910 109-111 |
| 4 pole Switch | 9MK 910 109-201 |

Spare parts:

| | |
|----------------------|-----------------|
| Red lockout lever | 9MK 910 109-301 |
| Yellow lockout lever | 9MK 910 109-311 |



Handy Box DT connector kit

Handy Box DT connector kit
(incl. Crimping Tool 8PE 910 118-011) 8KW 910 119-101

Content:
 10 x 2-Way Male DT connector incl. wedge
 10 x 3-Way Male DT connector incl. wedge
 8 x 6-Way Male DT connector incl. wedge
 10 x 2-Way Female DT connector incl. wedge
 10 x 3-Way Female DT connector incl. wedge
 8 x 6-Way Male DT connector incl. wedge
 100 x Male DT connector socket
 100 x Female DT connector socket
 1 x Crimping Tool
 1 x DT Wedge Removal Tool

| | |
|-------------------------|-----------------|
| Crimping Tool | 8PE 910 118-011 |
| 2 Pin DT Plug Set | 8KW 905 683-101 |
| 2 Pin DT Receptacle Set | 8KW 905 684-101 |
| 3 Pin DT Plug Set | 8KW 905 683-111 |
| 3 Pin DT Receptacle Set | 8KW 905 684-111 |
| 6 Pin DT Plug Set | 8KW 905 683-131 |
| 6 Pin DT Receptacle Set | 8KW 905 684-131 |



Handy Box Blade Fuse Kit

Handy Box Blade Fuse Kit 8JS 009 257-831

Content:
 1 x 8PE 713 576-011, A 96
 20 x Mini 2 A, D138
 20 x Mini 3 A, D139
 20 x Mini 4 A, D140
 20 x Mini 5 A, D141
 20 x Mini 7,5 A, D142
 20 x Mini 10 A, D143
 20 x Mini 15 A, D144
 20 x Mini 20 A, D145
 20 x Mini 25 A, D146
 20 x Mini 30 A, D147
 25 x ATO 2 A, D129
 25 x ATO 3 A, D69
 25 x ATO 4 A, D188
 25 x ATO 5 A, D70
 25 x ATO 7,5 A, D71
 25 x ATO 10 A, D72
 25 x ATO 15 A, D73
 25 x ATO 20 A, D74
 25 x ATO 25 A, D75
 25 x ATO 30 A, D76
 25 x ATO 40 A, D130



Handy Box Crimp Terminal Kit

Handy Box Crimp Terminal Kit 8KW 009 254-841

Content:
 20 x M4, 0,5 – 1,5 mm², A 67
 20 x M5, 0,5 – 1,5 mm², A 69
 20 x 6,3 mm, 0,5 – 1,0 mm², A 52
 20 x 6,3 mm, 0,5 – 1,0 mm², A 59
 20 x 4 mm, 0,5 – 1,0 mm², A 61
 20 x M5, 1,5 – 2,5 mm², A 78
 20 x 6,3mm, 1,5 – 2,5 mm², A 53
 20 x M4, 1,5 – 2,5 mm², A 68
 20 x M5, 1,5 – 2,5 mm², A 70
 20 x M6, 1,5 – 2,5 mm², A 72
 20 x 1,5 – 2,5 mm², A 80
 20 x 6,3mm, 1,5 – 2,5 mm², A 58
 20 x 6,3 mm, 1,5 – 2,5 mm², A 60
 20 x 4 mm, 0,5 – 1,0 mm², A 63
 20 x 2,8 mm, 0,5 – 1,0 mm², A 50
 20 x 6,3 mm, 0,5 – 1,0 mm², A 82
 20 x M5, 4,0 – 6,0 mm², A 71
 20 x M6, 4,0 – 6,0 mm², A 73
 20 x A 84
 20 x I 50
 1 x Crimping Tool



HELLA India Lighting Ltd.

6A, 6th Floor, Platinum Tower, 184, Udyog Vihar, Phase – I
Gurgaon, 122016 (Haryana)

E-mail: km.johnson@hella.com

Toll Free No.: 1800 103 5405

E&OE

Errors and Omissions excluded. Subject to technical and price modifications.

Please note the catalogue is a selection of our product range, refer to our 7th edition mining catalogue for our full range of products.

www.hellamining.com